

St. Catherine's Catholic Primary School
Pymore Road
Bridport
Dorset
DT6 3TR



Head Teacher Mrs Frances Guppy
Tel: (01308) 423568
Fax: (01308) 421291
Email: office@stcatherinesbridport.dorset.sch.uk
Website: www.stcatherinesbridport.dorset.sch.uk

“Live, Love and Learn Together”

8th September 2017

Dear Parents/Carers

On Tuesday 19th September we have booked a visit to the Nothe Fort in Weymouth where Year 6 will learn all about life on the home front in the Second World War and also about its impact on the local area. We are sure the children have been involving you at home with our studies on the war and we know this will be a worthwhile experience for them. We ask for a contribution of £10 towards the cost of the coach to Weymouth and taking part in the experience day.

To add to the experience, the organisers at the Nothe send this note about dress for the day:

‘Dress: It would add to the experience if the evacuees, and the adults, wore period dress. A home-made gas mask case, a teddy bear, cuddly toy or doll and/or a small case carried by each pupil would add to the reality of the period.’

Instructions for the gas mask and label have are attached to this email.

Many thanks in advance for your help making this a fun and enriching experience for the children.

Kind regards

Mrs Haylock
Class teacher

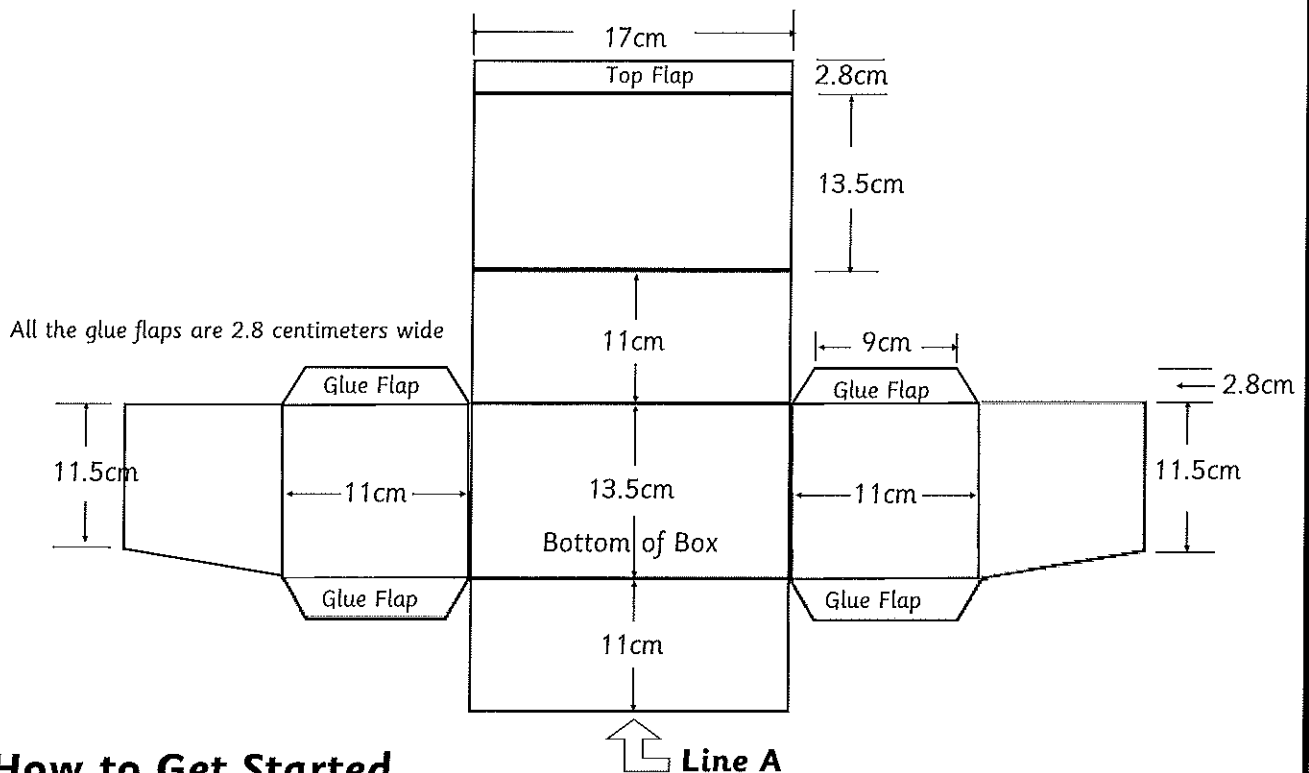
EVACUEE EXPERIENCE DAY – TUESDAY 19TH SEPTEMBER 2017

I give permission for to attend the Evacuee Experience Day on the 19th September 2017.

I enclose cash sum/cheque for £10 towards to cost of the trip.

Signed Contact No.

Make your own Gas Mask Box



How to Get Started

Take a large sheet of stiff brown card and draw out the net shown above to the right size. Mark the middle of the bottom edge of the card and place the centre of Line A there. Continue to draw the rest of the net and carefully cut it out. Score along the remaining lines as they are folds. Fold up your box and glue the Glue Flaps, they go inside the long sides of the box. The Top Lip tucks into the box and holds the top shut. Cut out the instructions below and stick them inside the lid.

PACKING OF RESPIRATOR

The Respirator should be placed in box with heavy end (container) standing on the bottom of the box.

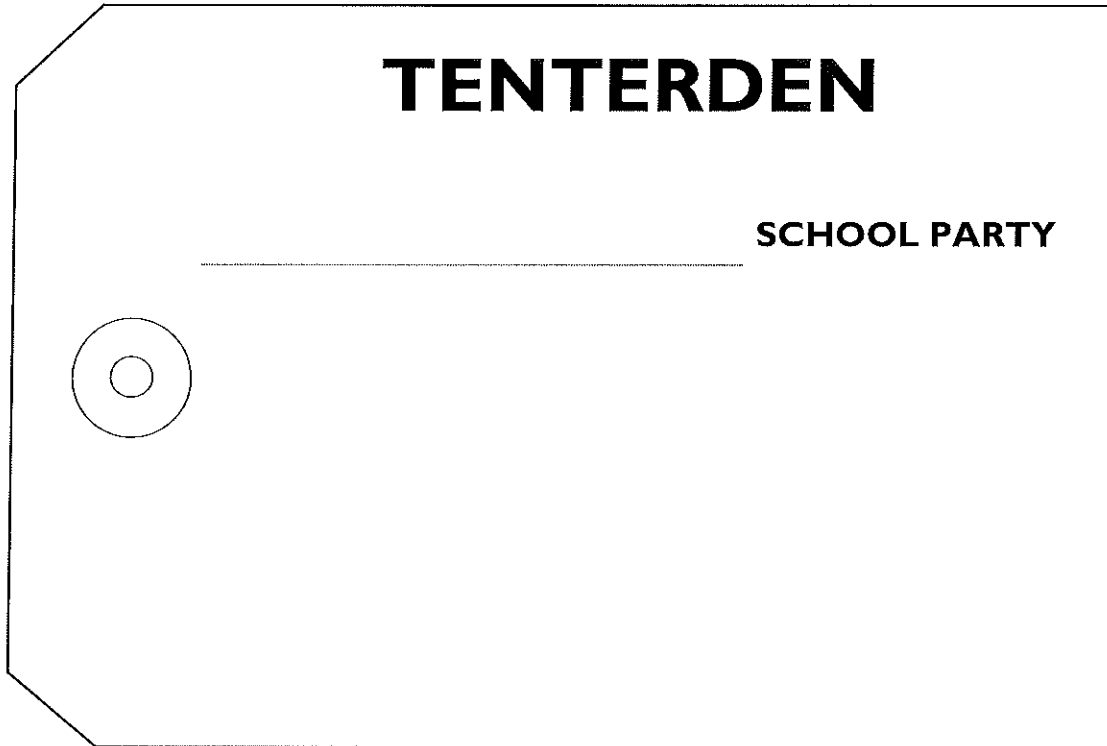
The transparent eyepiece should lie evenly on the top of the container and at full length without any deformation.

WHEN RESPIRATOR IS REQUIRED FOR USE.

1. **Hold Respirator by the straps.**
2. **Put on by first putting chin into the facepiece and then draw the straps over the head. Adjust straps to obtain close but comfortable fit.**
3. **Take off by pulling the straps over the head from the back. DO NOT TAKE RESPIRATOR OFF BY PULLING THE CONTAINER UPWARDS OVER THE FACE.**

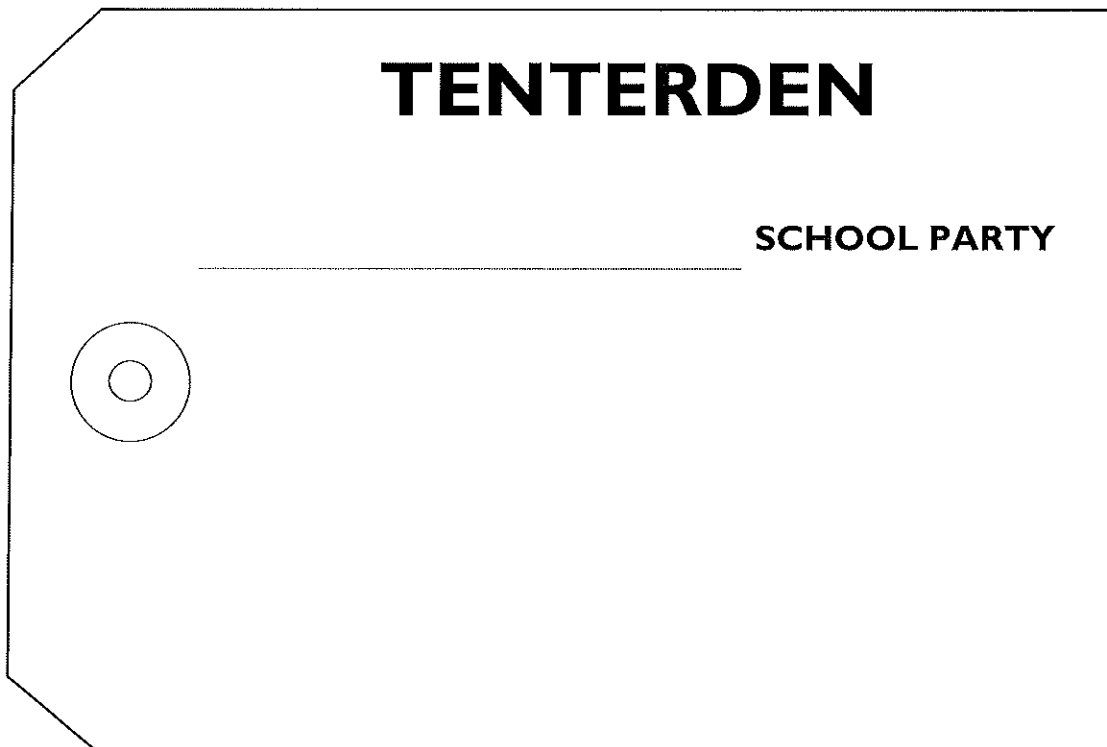
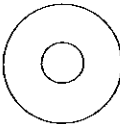
B.C.C LTD.

Evacuee Labels



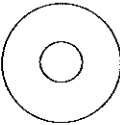
TENTERDEN

_____ **SCHOOL PARTY**



TENTERDEN

_____ **SCHOOL PARTY**



These are your childrens' labels. Each child must wear one securely fastened to them by a piece of string. If your photocopier takes card they can be photocopied onto light brown card and cut out. The hole can be punched with a hole punch and if you can find a hole re-inforcer at the stationers that might make them last longer.